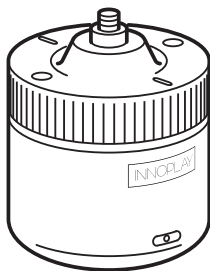




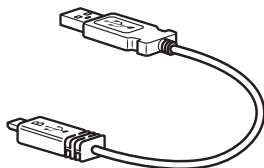
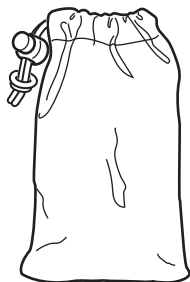
INNOPLAY

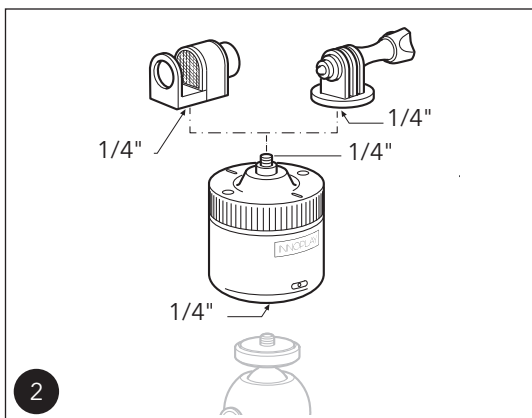
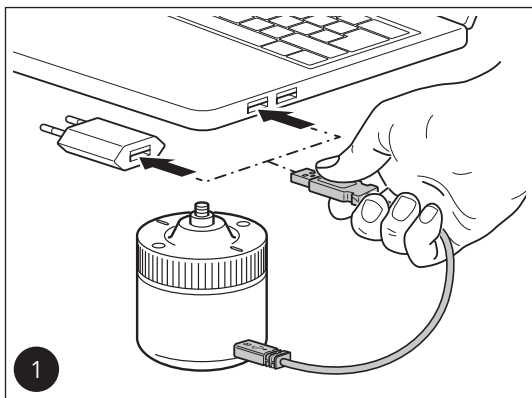
Life is miracle, Capture & Share

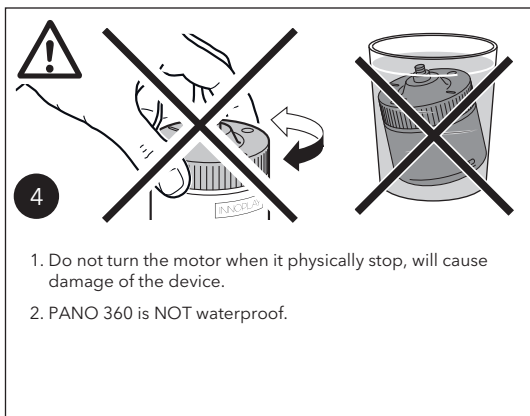
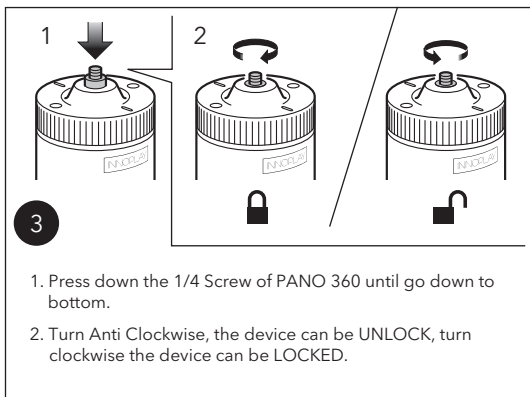


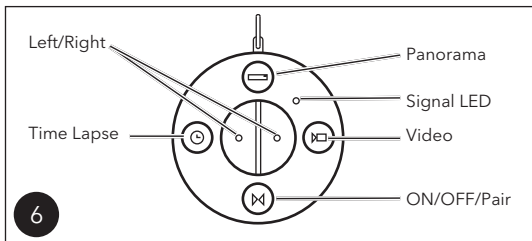
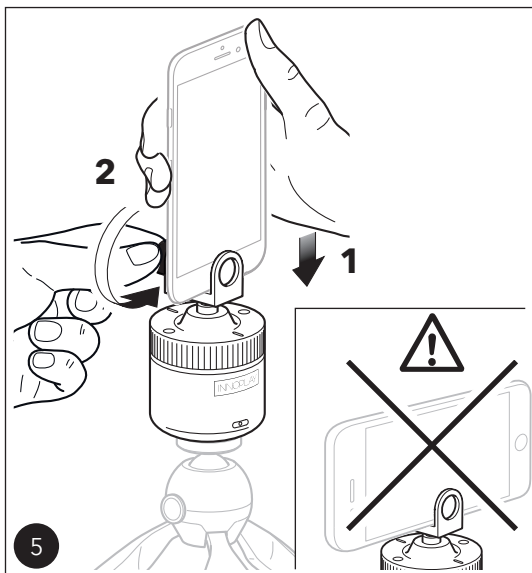
INSTRUCTIONS

IPANO360 MARK1





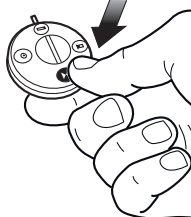


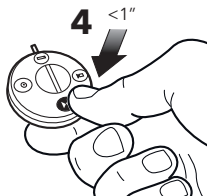
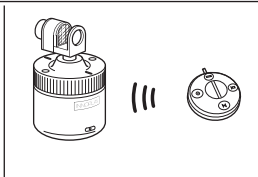
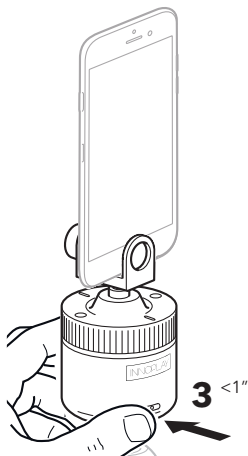




CR2032
Battery

2 ON





1. Insert CR2032 Battery to the remote.
2. Turn on PANO360 (Press more than 1 Second).
3. Press the "Pair" for turning on the remote.
4. Press again the ON/OFF button on PANO360 (Press Less than 1 Second).
5. Press again the "Pair" for pairing with PANO360.
6. Purple signal when pairing is successful.
7. Start controlling PANO360 from the remote.



1. Download "PIXI PANO360" app on the iOS App Store or Android Google Play Store.
2. Turn on Bluetooth in your Smartphone.
3. Turn on PANO360 (press the button for more than 1")
4. PIXI PANO360 app searches automatically for the PANO360 device: "Connected" appears on the bottom right of the screen when pairing is completed.
5. Start controlling PANO360 from the app, following the instructions on it or learn more in our official website.

App Features:

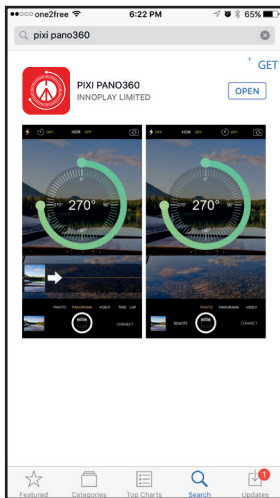
Quick Start Guide of APP Control



iOS 9.0 or later



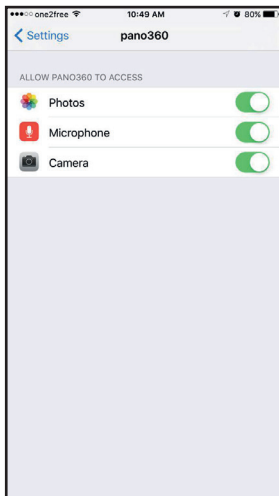
Android 5.0 or later



Install the PIXI PANO360.



iOS



1. In iOS Privacy settings, allow the PIXI PANO360 to access Photos, Microphone and Camera.
2. Switch on the Bluetooth for connecting to PANO360 Device.



Install the PIXI PANO360.



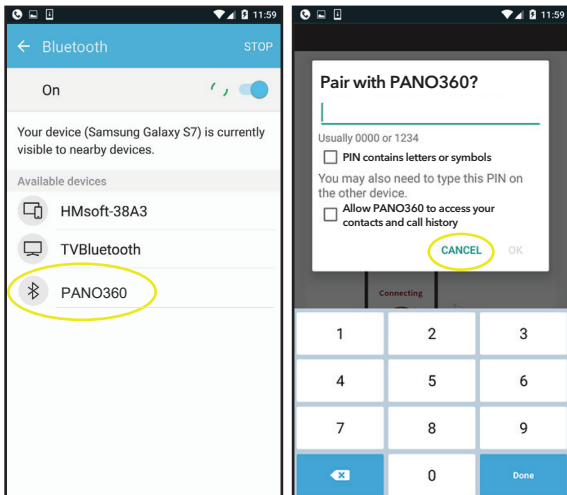
Android



1. In Android settings, allow the PIXI PANO360 to access Locations, Storage Space, Camera and Microphone.
2. Switch on the Bluetooth for connecting to PANO360 Device.

For some Smartphone with poor Bluetooth connection, we suggest switching on Location 📍 and Bluetooth 📶 for the better connection before open the APP.

Android



1. In Android settings, some smartphone will pop up a box about entering PIN numbers after switched on the Bluetooth and selected the PANO360 device.
2. Press "CANCEL" for without entering the PIN numbers, then go to smartphone home page and start to use the APP - PIXI PANO360

Android



Turn on the PANO360 device until blue light.
(Press the button for more than 1 second)

Connect to PANO360



Open the App, PIXI PANO360 will search the device automatically. "Connected" will appear at the bottom right corner of smartphone screen, means that successfully connected the PANO360 Device.



PIXI PANO360

Connect to PANO360



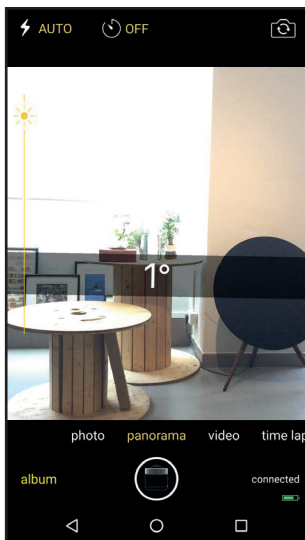
Photo mode:

Able to control the rotation directions (turn left /right) and switch on flash light long time or the timer.

And also controlling by the remote control for longer distance (Left / Right buttons).

Album > Review and Share the pictures and videos.

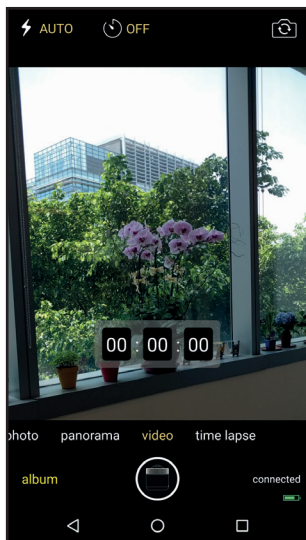
Connect to PANO360



360° panorama mode:

with Light setting, turn on flash light long time, timer and Balance reminding function.

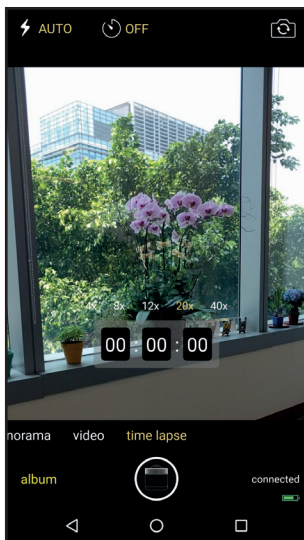
Connect to PANO360



360° Video mode:

For the video selfie.

Connect to PANO360



360° Time lapse video mode:

Moving Time-lapse with timer & Speed setting:
4X, 8X, 12X, 20X & 40X

Connect to PANO360

PRECAUTIONS

Do not leave your product unattended when working where the general public could be endangered.

Keep out of the reach of children.

It is recommended that the equipment be removed from the support for transportation.

Do not clean the product with solvents, thinners, benzene or other corrosive products.

OPERATING SPECIFICATIONS

Operation temperature range 0°C (32°F) + 40°C (104°F)

Storage temperature range -20°C (-4°F) + 70°C (158°F)

High temperature:

Avoid temperatures exceeding +70°C (158°F), and do not leave the controller exposed to direct strong sunlight for any extended period, e.g. in a car parked in sunny place.

Electrical precaution:

Never use any battery, power supply or accessory that is not specified by this manual. Never use any battery made or modified by yourself.

Do not insert metal objects or foreign bodies into the device, accessories, connecting cables and any mechanical and/or electrical and/or electronic part of this product.

Do not scratch, cut or excessively bend the cords and do not put heavy objects on them.

Do not use cables whose insulation is damaged.

To prevent compromising their insulation, do not leave cords close to any heating source.

Do not dismantle nor modify the equipment if not explicitly allowed by instructions.

Never touch the electrical contacts of the connecting cables, because they could deteriorate, thus compromising operation.

DISCLAIMER

The information contained in this document is subject to change without notice.

INNOPLAY makes no warranty and shall not be liable for any errors on information contained in this document.

Any changes or modifications not expressly approved by INNOPLAY could void the user's authority to operate this equipment.

INFORMATION FOR USERS



In accordance with Article 10 of Directive 2012/19/UE of the 04/07/2012 concerning Waste Electrical and Electronic Equipment (WEEE).

The above symbol, also present on equipment, indicates that, at such time as the user should decide to dispose of the equipment, it must NOT be disposed of as unsorted municipal waste, but must be collected separately. The same applies to all components of the equipment and any recharge or refill elements that the product may comprise.

For information on the waste collection systems suitable for this equipment, contact INNOPLAY LIMITED or any authorised member of the National Registers in EU countries. Household (or similar) waste may be disposed of via standard municipal differentiated waste collection schemes.

If you purchase a new version of this model or similar equipment - or if your existing equipment measures less than 25 cm - you may return the items you no longer require to your retailer who will take care of contacting the company or organization handling the proper collection and management of used equipment.

Correct separate collection and specific treatment of WEEE are necessary to avoid potential damage to human health and the environment, and favour the recycling and recovery of component materials.

Improper or illegal disposal of this product by the user will result in punishments or fines being applied in accordance with national Decrees based on Directive 91/156/EC and 2008/98/EC.

Thank you for purchasing a INNOPLAY product.

INNOPLAY products are warranted to be fit for the purpose for which they have been designed, and to be free from defects in materials and workmanship. This guarantee does not cover the product against subsequent damage or misuse. The period of validity of the Standard Limited Warranty is defined by the law in force in the country, state or region where the product is sold. Please retain your receipt as proof of purchase to repair your product under warranty.

DECLARATION OF CONFORMITY

Compliance for USA



FCC Class B Information

Warning: changes or modifications to this unit not expressly approved by the party responsible for compliance could void the user's authority to operate this equipment.

This equipment has been tested and found to comply with the limits for a Class B digital device, pursuant to part 15 of the FCC Rules. These limits are designed to provide reasonable protection against harmful interference in a residential installation. This equipment generates, uses and can radiate radio frequency energy and, if not installed and used in accordance with the instructions, may cause harmful interference to radio communications. However, there is no guarantee that interference will not occur in a particular installation. If this equipment does cause harmful interference to radio or television reception, which can be determined by turning the equipment off and on, the user is encouraged to try to correct the interference by one or more of the following measures:

- Reorient or relocate the receiving antenna.
- Increase the separation between the equipment and receiver.
- Connect the equipment into an outlet on a circuit different from that to which the receiver is connected.
- Consult the dealer or an experienced radio/TV technician for help.

Model: IPANO360 MARK1

FCC ID: 2AJ2QIPANO360MARK1

Model: IPANO360 REMOTE

FCC ID: 2AJ2QIPANO360MARK1R

Content of EU Declaration of Conformity



Responsible for placing the product on the market :

INNOPLAY LIMITED Via 106A, Enterprise Place 5W, No. 5 Science Park West Avenue, Hong Kong Science Park, Shatin, N.T., HK

Product name : Electronic Photography Precision Device

Product code : IPANO360 MARK1

Complies with the requirements of the following directives and carries "CE" marking accordingly :

Radio Equipment Directive 2014/53/EC

EN 301 489-1 V2.1.1, Final draft EN 301 489-3 V2.1.1,
Draft EN 301 489-17 V3.2.0, EN 300 328 V2.1.1, EN 300 440 V2.1.1
EN 62479:2010,
EN 60950-1:2006+A11: 2009+ A1:2010+A12:2011 +A2:2013

RoHS directive 2011/65/EU

The product complies with Directive 2011/65/EU of the European Parliament and of the Council of 8 June 2011 on the restriction of the use of certain hazardous substances in electrical and electronic equipment.

Manufacturer : Shenzhen Energy Storage Electronic Co., Ltd

No.8 Weisongka Ind. Park, Xincheng Community, Guanlan Street, Longhua New District, Shenzhen, China

Importer : INNOPLAY LIMITED

Unit 106A, 1/F, Enterprise Place 5W, No. 5 Science Park West Avenue, Hong Kong Science Park, Shatin, N.T., Hong Kong

Frequency & Max Output Power :

Bluetooth

Frequency : 2402MHz-2480MHz

Max output power : -0.83dBm

Host

Frequency : 2450MHz

Max output power : -4.39dBm

Remote

Frequency : 2450MHz

Max output power : -2.63dBm